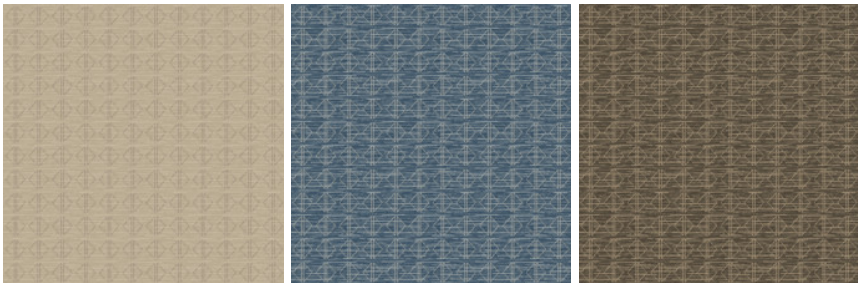


Diamonds 12x15 Hidden Edge

Nom De Style	Tapis	
Collection	West Elm + Shaw Contract	
Numéro De Style	G270R	
Construction	Boucle De Motif à Plusieurs Niveaux	
Fibre	Ecosolution Q® Nylon	
Méthode De Teinture	100% Teint EN Solution	
Backing Type	Ultraloc® + Endos Antidérapant	
Edge Type	Hidden Edge	
	u.s.	metric
Dimensions Du Produit	12 ft x 15 ft	3.66 m x 4.57 m
Poids De La Fibre Touffetée	0.442 in	11.21 mm

Available Colorways



58111 Sisal  
910 hidden edge color

58485 Denim  
995 hidden edge color

58761 Shadow  
167 hidden edge color

Spécifications Du Rendement + Tests Et Essai

Inflammabilité	Pass*	*Pill test data is based on style 5A358
----------------	-------	-----------------------------------------

Garanties

Limitée Commerciale De 5 Ans

Attributs + Certifications

Health & Wellbeing	
Indoor Air Quality	CRI Green Label Plus (GLP)   GLP8472
Climate Impact	
Product Packaging	100% Recyclable
Global Product Assessment	Country of Origin**   Imported

Informations Supplémentaires

\*\*Meets or exceeds all local and national regulations in country of manufacture. (Manufactured in an ISO 9001 & ISO 14001 certified facility or equivalent)

Maintenance Guidelines

Coordination Des Produits

Carpet Tile: **Stonework Tile, Chisel Tile, Grit Tile, Zest Tile, Zeal Tile, Spark Tile**  
Broadloom: **Verve, Colca, Kista By Lindsay Stead, Stone, Flame, Shale, Diamonds**



PVC-Free