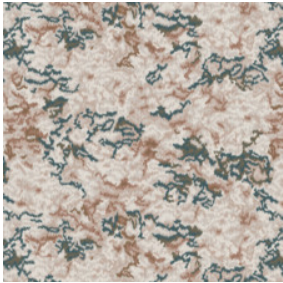


## Flame 8x10 Hidden Edge

Nom De Style	Tapis	
Collection	West Elm + Shaw Contract	
Numéro De Style	G261R	
Construction	Coupe à Motif	
Fibre	Ecosolution Q® Nylon	
Méthode De Teinture	100% Teint EN Solution	
Backing Type	Ultraloc® + Endos Antidérapant	
Edge Type	Hidden Edge	
Dimensions Du Produit	u.s.	metric
	8 ft x 10 ft	2.44 m x 3.05 m
	0.491 in	12.46 mm
Poids De La Fibre Touffetée		

### Available Colorways



56675 Expression  
910 hidden edge color

### Spécifications Du Rendement + Tests Et Essai

Inflammabilité	Pass*	*Pill test data is based on style 5A356
----------------	-------	---

### Garanties

Limitée Commerciale De 5 Ans

### Attributs + Certifications

Health & Wellbeing		
Indoor Air Quality	CRI Green Label Plus (GLP)   GLP8472	
Climate Impact		
Product Packaging	100% Recyclable	
Global Product Assessment	Country of Origin**   Imported	

### Informations Supplémentaires

\*\*Meets or exceeds all local and national regulations in country of manufacture. (Manufactured in an ISO 9001 & ISO 14001 certified facility or equivalent)

[Maintenance Guidelines](#)

Coordination Des Produits

Carpet Tile: **Stonework Tile, Chisel Tile, Grit Tile, Zest Tile, Zeal Tile, Spark Tile**  
Broadloom: **Verve, Colca, Kista By Lindsay Stead, Stone, Flame, Shale, Diamonds**



PVC-Free