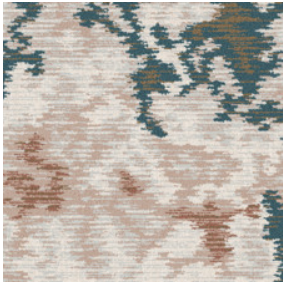


Flame 6x9 Hidden Edge

Nom De Style	Tapis	
Collection	West Elm + Shaw Contract	
Numéro De Style	G260R	
Construction	Coupe à Motif	
Fibre	Ecosolution Q® Nylon	
Méthode De Teinture	100% Teint EN Solution	
Backing Type	Ultraloc® + Endos Antidérapant	
Edge Type	Hidden Edge	
	u.s.	metric
Dimensions Du Produit	6 ft x 9 ft	1.83 m x 2.74 m
Poids De La Fibre Touffetée	0.491 in	12.46 mm

Available Colorways



56675 Expression
910 hidden edge color

Spécifications Du Rendement + Tests Et Essai

Inflammabilité	Pass*	*Pill test data is based on style 5A356
----------------	-------	-----------------------------------------

Garanties

Limitée Commerciale De 5 Ans

Attributs + Certifications

Health & Wellbeing	
Indoor Air Quality	CRI Green Label Plus (GLP) GLP8472
Climate Impact	
Product Packaging	100% Recyclable
Global Product Assessment	Country of Origin** Imported

Informations Supplémentaires

**Meets or exceeds all local and national regulations in country of manufacture. (Manufactured in an ISO 9001 & ISO 14001 certified facility or equivalent)

[Maintenance Guidelines](#)

Coordination Des Produits

Carpet Tile: **Stonework Tile, Chisel Tile, Grit Tile, Zest Tile, Zeal Tile, Spark Tile**
Broadloom: **Verve, Colca, Kista By Lindsay Stead, Stone, Flame, Shale, Diamonds**



PVC-Free