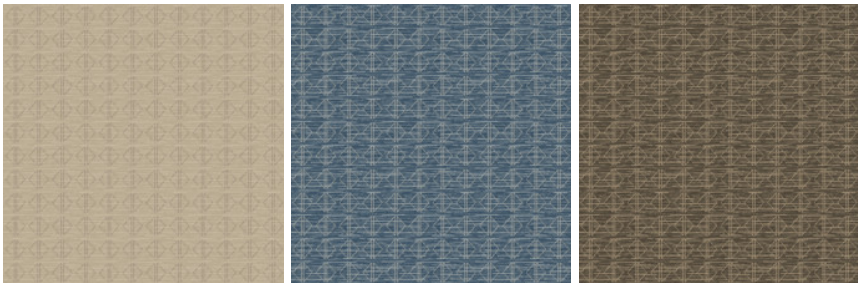


Diamonds 12x15

Product Type	Area Rug	
Collection	West Elm + Shaw Contract	
Style Number	G266R	
Construction	Multi-Level Pattern Loop	
Fiber	Ecosolution Q® Nylon	
Dye Method	100% Solution Dyed	
Backing Type	Ultraloc® + Non Skid Backing	
Edge Type	Yarn Serge	
	u.s.	metric
Product Size	12 ft x 15 ft	3.66 m x 4.57 m
Total Thickness	0.442 in	11.21 mm

Available Colorways



58111 Sisal  
5378D serge yarn color

58485 Denim  
5395D serge yarn color

58761 Shadow  
6025 serge yarn color

Performance + Testing

Pill Test	Pass*	*Pill test data is based on style 5A358
ADA Compliance	To achieve ADA compliance, the product must have a rubber tapered edge finish attached, a finished thickness of less than 0.5 inches, and affixed to the floor. Refer to local codes for additional information regarding the use of rugs in ADA compliant spaces.	

Warranties

5 Year Commercial Limited Warranty

Diversity & Inclusion

We promote supplier participation that is reflective of Shaw Industries' diverse customer base and local community. We believe having a strong Supplier Diversity Program is strategic for bringing more innovation to our businesses and opening new markets for growth.

Material Health & Environmental Certifications

Health & Wellbeing	CRI Green Label Plus (GLP)   GLP8472
Indoor Air Quality	
Climate Impact	100% Recyclable
Product Packaging	
Global Product Assessment	Country of Origin**   USA

### Coordinating Products

---

Carpet Tile: **Stonework Tile, Chisel Tile, Grit Tile, Zest Tile, Zeal Tile, Spark Tile**

Broadloom: **Verve, Colca, Kista By Lindsay Stead, Stone, Flame, Shale, Diamonds**

### Additional Information

---

\*\*Meets or exceeds all local and national regulations in country of manufacture. (Manufactured in an ISO 9001 & ISO 14001 certified facility or equivalent)

[Maintenance Guidelines](#)



## PVC-Free

Corporate Headquarters +1 800 257 7429 | +1 706 532 7984 | Atlanta +1 404 853 7429 | Bengaluru +91 80 6773 0202 | Beijing +86 10 6568 588 | Chicago +1 312 467 1331 | Dubai +971 4 584 6956 | Hong Kong +852 2623 0371 | London +44 207 961 4120 | Los Angeles +1 800 233 1614 | Melbourne +61 3 9939 8543 | Mexico City +55 5010 7600 | Mumbai +91 22 6284 5050 | Nantong +86 400 800 7429 | New York +1 212 953 7429 | Paris +33 (0) 1 81 22 44 39 | San Francisco +1 415 955 1920 | Shanghai +86 21 3338 4000 | Singapore +65 6733 1811 | Sydney +61 800 556 302

© 2025 Shaw Industries Group, Inc., a Berkshire Hathaway Company  
June 8, 2025

2 of 2