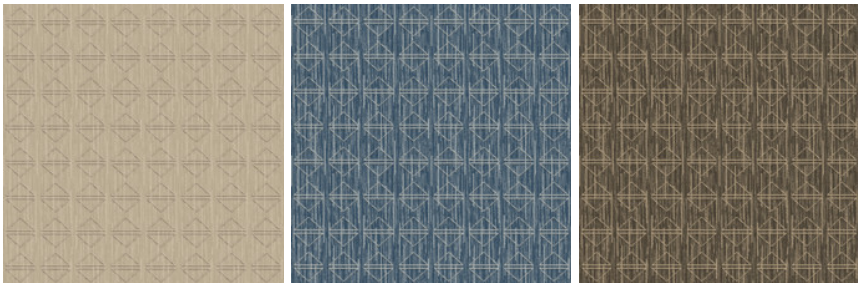


Diamonds 8x10

Product Type	Area Rug	
Collection	West Elm + Shaw Contract	
Style Number	G265R	
Construction	Multi-Level Pattern Loop	
Fiber	Ecosolution Q® Nylon	
Dye Method	100% Solution Dyed	
Backing Type	Ultraloc® + Non Skid Backing	
Edge Type	Yarn Serge	
	u.s.	metric
Product Size	8 ft x 10 ft	2.44 m x 3.05 m
Total Thickness	0.442 in	11.21 mm

Available Colorways



58111 Sisal
5378D serge yarn color

58485 Denim
5395D serge yarn color

58761 Shadow
6025 serge yarn color

Performance + Testing

Pill Test	Pass*	*Pill test data is based on style 5A358
ADA Compliance	To achieve ADA compliance, the product must have a rubber tapered edge finish attached, a finished thickness of less than 0.5 inches, and affixed to the floor. Refer to local codes for additional information regarding the use of rugs in ADA compliant spaces.	

Warranties

5 Year Commercial Limited Warranty

Diversity & Inclusion

We believe all humans are equal. Individually and collectively, we need to proactively create and promote opportunities that give everybody an equal footing in life. We nurture an environment where every voice and perspective can be heard, and proactively promote accessibility and inclusivity inside our network and beyond. One proof point is our ability to meet the criteria of the Social Fairness pillar of the Cradle to Cradle Product Standard. At Shaw Industries, we promote supplier participation that is reflective of Shaw's diverse customer base and local community. More than 42% of our spend***** is with small and diverse businesses. We believe having a strong Supplier Diversity Program is strategic for bringing more innovation to our businesses and opening new markets for growth.

Coordinating Products

Carpet Tile: **Stonework Tile, Chisel Tile, Grit Tile, Zest Tile, Zeal Tile, Spark Tile**
Broadloom: **Verve, Colca, Kista By Lindsay Stead, Stone, Flame, Shale, Diamonds**

Material Health & Environmental Certifications

Health & Wellbeing	
Indoor Air Quality	CRI Green Label Plus (GLP) GLP8472
Climate Impact	
Product Packaging	100% Recyclable
Global Product Assessment	Country of Origin** USA

Additional Information

**Meets or exceeds all local and national regulations in country of manufacture. (Manufactured in an ISO 9001 & ISO 14001 certified facility or equivalent)
[Maintenance Guidelines](#)

