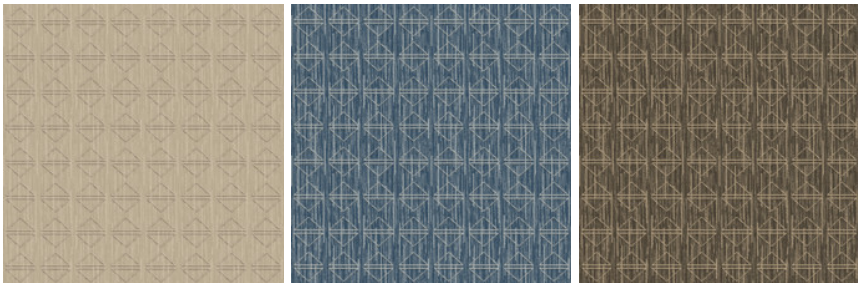


Diamonds 8x10 Hidden Edge

| | | |
|-----------------|------------------------------|-----------------|
| Product Type | Area Rug | |
| Collection | West Elm + Shaw Contract | |
| Style Number | G269R | |
| Construction | Multi-Level Pattern Loop | |
| Fiber | Ecosolution Q® Nylon | |
| Dye Method | 100% Solution Dyed | |
| Backing Type | Ultraloc® + Non Skid Backing | |
| Edge Type | Hidden Edge | |
| | u.s. | metric |
| Product Size | 8 ft x 10 ft | 2.44 m x 3.05 m |
| Total Thickness | 0.442 in | 11.21 mm |

Available Colorways



58111 Sisal
910 hidden edge color

58485 Denim
995 hidden edge color

58761 Shadow
167 hidden edge color

Data + Testing

| | | |
|-----------|-------|---|
| Pill Test | Pass* | *Pill test data is based on style 5A358 |
|-----------|-------|---|

Warranties

5 Year Commercial Limited

Material Health & Environmental Certifications

| | |
|---------------------------|--------------------------------------|
| Health & Wellbeing | CRI Green Label Plus (GLP) GLP8472 |
| Indoor Air Quality | |
| Climate Impact | 100% Recyclable |
| Product Packaging | |
| Global Product Assessment | Country of Origin** USA |

Additional Information

**Meets or exceeds all local and national regulations in country of manufacture. (Manufactured in an ISO 9001 & ISO 14001 certified facility or equivalent)

Maintenance Guidelines

Coordinating Products

Carpet Tile: **Stonework Tile, Chisel Tile, Grit Tile, Zest Tile, Zeal Tile, Spark Tile**
Broadloom: **Verve, Colca, Kista By Lindsay Stead, Stone, Flame, Shale, Diamonds**



PVC-Free