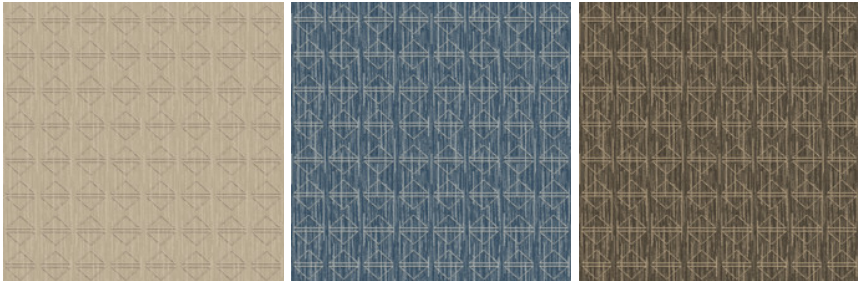


Diamonds 8x10 Hidden Edge

Nom De Style	Tapis	
Collection	West Elm + Shaw Contract	
Numéro De Style	G269R	
Construction	Boucle De Motif à Plusieurs Niveaux	
Fibre	Ecosolution Q® Nylon	
Méthode De Teinture	100% Teint EN Solution	
Backing Type	Ultraloc® + Endos Antidérapant	
Edge Type	Hidden Edge	
	u.s.	metric
Dimensions Du Produit	8 ft x 10 ft	2.44 m x 3.05 m
Poids De La Fibre Touffetée	0.442 in	11.21 mm

Available Colorways



58111 Sisal
910 hidden edge color

58485 Denim
995 hidden edge color

58761 Shadow
167 hidden edge color

Spécifications Du Rendement + Tests Et Essai

Inflammabilité	Pass*	*Pill test data is based on style 5A358
----------------	-------	---

Garanties

Limitée Commerciale De 5 Ans

Attributs + Certifications

Health & Wellbeing	
Indoor Air Quality	CRI Green Label Plus (GLP) GLP8472
Climate Impact	
Product Packaging	100% Recyclable
Global Product Assessment	Country of Origin** Imported

Informations Supplémentaires

**Meets or exceeds all local and national regulations in country of manufacture. (Manufactured in an ISO 9001 & ISO 14001 certified facility or equivalent)

[Maintenance Guidelines](#)

Coordination Des Produits

Carpet Tile: **Stonework Tile, Chisel Tile, Grit Tile, Zest Tile, Zeal Tile, Spark Tile**

Broadloom: **Verve, Colca, Kista By Lindsay Stead, Stone, Flame, Shale, Diamonds**



PVC-Free

Corporate Headquarters +1 800 257 7429 | +1 706 532 7984 | Atlanta +1 404 853 7429 | Bengaluru +91 80 6773 0202 | Beijing +86 10 6568 588 | Chicago +1 312 467 1331 | Dubai +971 4 584 6956 | Hong Kong +852 2623 0371 | London +44 207 961 4120 | Los Angeles +1 800 233 1614 | Melbourne +61 3 9939 8543 | Mexico City +55 5010 7600 | Mumbai +91 22 6284 5050 | Nantong +86 400 800 7429 | New York +1 212 953 7429 | Paris +33 (0) 1 81 22 44 39 | San Francisco +1 415 955 1920 | Shanghai +86 21 3338 4000 | Singapore +65 6733 1811 | Sydney +61 800 556 302

© 2025 Shaw Industries Group, Inc., a Berkshire Hathaway Company
June 8, 2025

2 of 2