

Chisel Tile Rug

| | | |
|-----------------------|------------------------------|-----------------|
| Product Type | Area Rug | |
| Collection | West Elm + Shaw Contract | |
| Style Number | G296R | |
| Construction | Multi-Level Pattern/Cut Loop | |
| Dye Method | 100% Solution Dyed | |
| Primary Backing | Synthetic | |
| Protective Treatments | SSP® Shaw Soil Protection | |
| | u.s. | metric |
| Product Size | 24 in x 24 in | 61 cm x 61 cm |
| Area Per Carton | 48 ft² | 4.46 m² |
| Pieces Per Carton | 12 pcs | |
| Available Rug Sizes | 6 ft x 8 ft 1 box | 1.83 m x 2.44 m |
| | 8 ft x 12 ft 2 boxes | 2.44 m x 3.66 m |
| | 12 ft x 12 ft 3 boxes | 3.66 m x 3.66 m |
| | 12 ft x 16 ft 4 boxes | 3.66 m x 4.88 m |
| | 12 ft x 20 ft 5 boxes | 3.66 m x 6.1 m |



Recommended Installation Method

Monolithic

Quarter Turn

Brick

Ashlar

Random

Product is installed using LokWorx Tabs included in product packaging.

Data + Testing

| | | |
|----------------------------|---------|---|
| Cri Green Label Plus (Glp) | GLP9968 | |
| Pill Test | Pass* | *Pill test data is based on style 5T485 |

Warranties

Lifetime Commercial Limited

Coordinating Products

Carpet Tile: **Stonework Tile, Chisel Tile, Grit Tile, Zest Tile, Zeal Tile, Spark Tile**
Broadloom: **Verve, Colca, Kista By Lindsay Stead, Stone, Flame, Shale, Diamonds**

Material Health & Environmental Certifications

Certifications Below Apply Exclusively To The Carpet Tile Rug Itself And Not The Lokworx Tabs Adhesive

Health & Wellbeing

| | |
|---|---|
| Material Ingredient Transparency | Cradle to Cradle Certified® Silver Level (Version 4.0) Health Product Declaration (HPD) 1,000 ppm Disclosure Living Building Challenge (LBC) Free of Red List Chemicals Declare LBC Compliant NSF 140 Gold |
| Indoor Air Quality | CRI Green Label Plus (GLP) GLP9968 |
| Climate Impact | |
| Environmental Product Declaration (EPD) | 3rd Party Certified in Accordance with ISO14044, ISO14025 & EN15804 |
| Embodied Carbon (Cradle to Gate) | 3.89 kg CO₂/m² |
| Life-Cycle Carbon Emissions | Carbon Neutral |
| Product Packaging | 100% Recyclable |
| Global Product Assessment | Singapore Green Label Certified CE Marking (EN 14041) 3rd Party Certified Environmental Guarantee* Re[turn] Reclamation Program* Pickup & Delivery Available Country of Origin** USA |

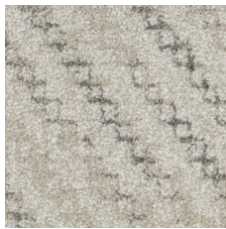
Well V2 Contribution Credit

| | |
|--|---------------------------------------|
| X08 Hazardous Material Reduction Part 1: Limit Hazardous Materials Optimization – 1 pt | C2C Silver Level (Version 4.0) |
|--|---------------------------------------|

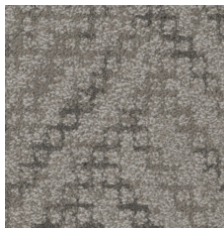
Green Leed Contribution Credit

| | |
|---|---|
| MR Credit: Building Product Disclosure and Optimization Environmental Product Declarations - Option 1: Environmental Product Declaration (EPD) | 3rd Party Certified in Accordance with ISO14044, ISO14025 & EN15804 |
| MR Credit: Building Product Disclosure and Optimization Material Ingredients - Option 1: Material Ingredient Reporting | C2C Silver Level (Version 4.0) or HPD (Version 2.1) |
| MR Credit: Building Product Disclosure and Optimization Material Ingredients - Option 2: Material Ingredient Optimization | C2C Silver Level (Version 4.0) |
| MR Credit: Building Product Disclosure and Optimization Sourcing of Raw Materials - Option 2: Leadership Extraction Practices | Environmental Guarantee: Re[turn] Reclamation Program* Pickup & Delivery Available |
| EQ Credit: Low Emitting Materials Option 1: Product Category Calculations | Green Label Plus Certification: GLP9968 |

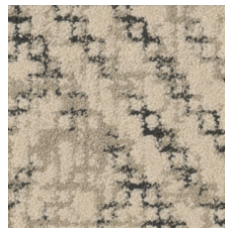
Available Colorways



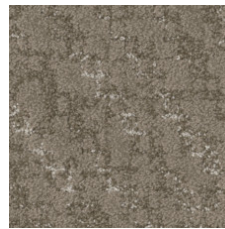
Marble 84100



Granite 84105



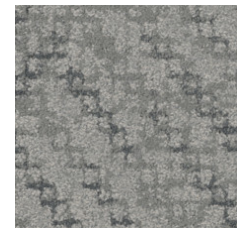
Pebble 84111



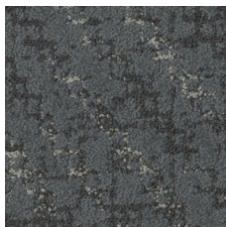
Clay 84506



Slate 84518



Mineral 84535



Graphite 84580



Flint 84761

Additional Information

* To learn more about the recyclability of our products and our re[TURN], please visit shawcontract.com/sustainability.

**Meets or exceeds all local and national regulations in country of manufacture.

[Installation Guidelines](#)

[Maintenance Guidelines](#)

Specifications are subject to nominal manufacturing variance. Material supply and/or manufacturing processes may necessitate changes without notice.

This product is an exclusive design and may not be duplicated in any manner. Use of this design in the creation of another product design is also strictly prohibited.

Visit shawcontract.com/testing for more information.



Declare.



PVC-Free

Corporate Headquarters +1 800 257 7429 | +1 706 532 7984 | Atlanta +1 404 853 7429 | Bengaluru +91 80 6773 0202 | Beijing +86 10 6568 588 | Chicago +1 312 467 1331 | Dubai +971 4 584 6956 | Hong Kong +852 2623 0371 | London +44 207 961 4120 | Los Angeles +1 800 233 1614 | Melbourne +61 3 9939 8543 | Mexico City +55 5010 7600 | Mumbai +91 22 6284 5050 | Nantong +86 400 800 7429 | New York +1 212 953 7429 | Paris +33 (0) 1 81 22 44 39 | San Francisco +1 415 955 1920 | Shanghai +86 21 3338 4000 | Singapore +65 6733 1811 | Sydney +61 800 556 302

© 2025 Shaw Industries Group, Inc., a Berkshire Hathaway Company
June 7, 2025

3 of 3