

Chisel Tile Rug

Product Type	Area Rug	
Collection	West Elm + Shaw Contract	
Style Number	G296R	
Construction	Multi-Level Pattern Cut/Loop	
Fiber	Ecosolution Q100™ Nylon	
Dye Method	100% Solution Dyed	
Primary Backing	Synthetic	
Secondary Backing	Ecoworx® Tile + Lokworx Tabs	
Protective Treatments	SSP® Shaw Soil Protection	
	u.s.	metric
Product Size	24 in x 24 in	61 cm x 61 cm
Area per Carton	48 ft²	4.46 m²
Pieces per Carton	12 pcs	
Available Rug Sizes	6 ft x 8 ft   1 box	1.83 m x 2.44 m
	8 ft x 12 ft   2 boxes	2.44 m x 3.66 m
	12 ft x 12 ft   3 boxes	3.66 m x 3.66 m
	12 ft x 16 ft   4 boxes	3.66 m x 4.88 m
	12 ft x 20 ft   5 boxes	3.66 m x 6.1 m



Recommended Installation Method

Monolithic

Quarter Turn

Brick

Ashlar

Random

Product is installed using LokWorx Tabs included in product packaging.

Performance + Testing

CRI Green Label Plus (GLP)	GLP9968	
Pill Test	Pass*	*Pill test data is based on style 5T485
ADA Compliance	To achieve ADA compliance, the product must have a rubber tapered edge finish attached, a finished thickness of less than 0.5 inches, and affixed to the floor. Refer to local codes for additional information regarding the use of rugs in ADA compliant spaces.***	

Warranties

Lifetime Commercial Limited Warranty

Diversity & Inclusion

We believe all humans are equal. Individually and collectively, we need to proactively create and promote opportunities that give everybody an equal footing in life. We nurture an environment where every voice and perspective can be heard, and proactively promote accessibility and inclusivity inside our network and beyond. One proof point is our ability to meet the criteria of the Social Fairness pillar of the Cradle to Cradle Product Standard. At Shaw Industries, we promote supplier participation that is reflective of Shaw's diverse customer base and local community. More than 42% of our spend\*\*\*\* is with small and diverse businesses. We believe having a strong Supplier Diversity Program is strategic for bringing more innovation to our businesses and openingnew markets for growth.

Coordinating Products

Carpet Tile: **Stonework Tile, Chisel Tile, Grit Tile, Zest Tile, Zeal Tile, Spark Tile**  
Broadloom: **Verve, Colca, Kista By Lindsay Stead, Stone, Flame, Shale, Diamonds**

Material Health & Environmental Certifications

Certifications below apply exclusively to the carpet tile rug itself and not the LokWorx Tabs adhesive

Health & Wellbeing

Material Ingredient Transparency

**Cradle to Cradle Certified® | Silver Level (Version 4.0)**  
**Health Product Declaration (HPD) | 1,000 ppm Disclosure**  
**Living Building Challenge (LBC) | Free of Red List Chemicals**  
**Declare | LBC Compliant**  
**NSF 140 | Gold**  
**CRI Green Label Plus (GLP) | GLP9968**

Indoor Air Quality

Climate Impact

Environmental Product Declaration (EPD)  
Embodied Carbon (Cradle to Gate)  
Life-Cycle Carbon Emissions  
Product Packaging

**3rd Party Certified in Accordance with ISO14044, ISO14025 & EN15804**  
**3.89 kg CO<sub>2</sub>/m<sup>2</sup>**  
**Carbon Neutral**  
**100% Recyclable**

Global Product Assessment

**Singapore Green Label | Certified**  
**CE Marking (EN 14041) | 3rd Party Certified**  
**Environmental Guarantee\* | Re[turn] Reclamation Program\* | Pickup & Delivery Available**  
**Country of Origin\*\* | USA**

WELL V2 Contribution Credit

X08 Hazardous Material Reduction  
Part 1: Limit Hazardous Materials Optimization

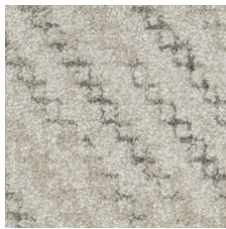
**C2C Silver Level (Version 4.0)**

Leed v4 Contribution Credits

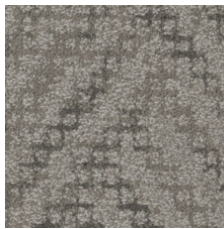
MR Credit: Building Product Disclosure and Optimization  
Environmental Product Declarations - Option 1: Environmental Product Declaration (EPD)  
MR Credit: Building Product Disclosure and Optimization  
Material Ingredients - Option 1: Material Ingredient Reporting  
MR Credit: Building Product Disclosure and Optimization  
Material Ingredients - Option 2: Material Ingredient Optimization  
MR Credit: Building Product Disclosure and Optimization  
Sourcing of Raw Materials - Option 2: Leadership Extraction Practices  
EQ Credit: Low Emitting Materials  
Option 1: Product Category Calculations

**3rd Party Certified in Accordance with ISO14044, ISO14025 & EN15804**  
  
**C2C Silver Level (Version 4.0) or HPD (Version 2.1)**  
  
**C2C Silver Level (Version 4.0)**  
  
**Environmental Guarantee: Re[turn] Reclamation Program\* | Pickup & Delivery Available**  
**Green Label Plus Certification: GLP9968**

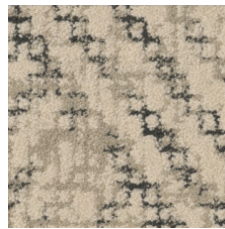
### Available Colorways



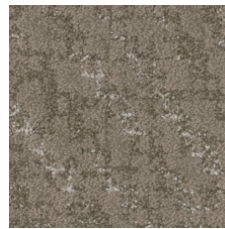
Marble 84100



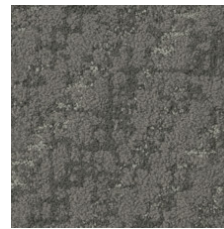
Granite 84105



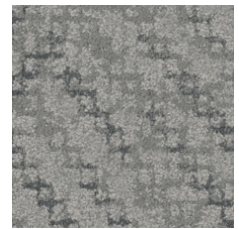
Pebble 84111



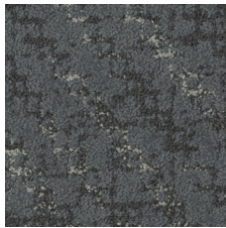
Clay 84506



Slate 84518



Mineral 84535



Graphite 84580



Flint 84761

### Additional Information

\* To learn more about the recyclability of our products and our re[TURN], please visit [shawcontract.com/sustainability](https://shawcontract.com/sustainability).

\*\*Meets or exceeds all local and national regulations in country of manufacture.

\*\*\*This carpet is manufactured to be ADA compliant, but to be fully ADA compliant, the end-user must ensure the carpet is adhered to the floor and installed as outlined in the ADA standards.

[Installation Guidelines](#)

[Maintenance Guidelines](#)

Specifications are subject to nominal manufacturing variance. Material supply and/or manufacturing processes may necessitate changes without notice.

This product is an exclusive design and may not be duplicated in any manner. Use of this design in the creation of another product design is also strictly prohibited.

Visit [shawcontract.com/testing](https://shawcontract.com/testing) for more information.



Corporate Headquarters +1 800 257 7429 | +1 706 532 7984 | Atlanta +1 404 853 7429 | Bengaluru +91 80 6773 0202 | Beijing +86 10 6568 588 | Chicago +1 312 467 1331 | Dubai +971 4 584 6956 | Hong Kong +852 2623 0371 | Latin America (Miami) +1 305 827 5912 | London +44 207 961 4120 | Los Angeles +1 800 233 1614 | Melbourne +61 3 9939 8543 | Mexico City +55 5010 7600 | Mumbai +91 22 6284 5050 | Nantong +86 400 800 7429 | New York +1 212 953 7429 | Paris +33 (0) 1 81 22 44 39 | San Francisco +1 415 955 1920 | Santiago +562 2431 5000 x 550 | São Paulo +55 11 3071 1702 | Shanghai +86 21 3338 4000 | Singapore +65 6733 1811 | Sydney +61 800 556 302

© 2025 Shaw Industries Group, Inc., a Berkshire Hathaway Company  
January 28, 2025

3 of 3