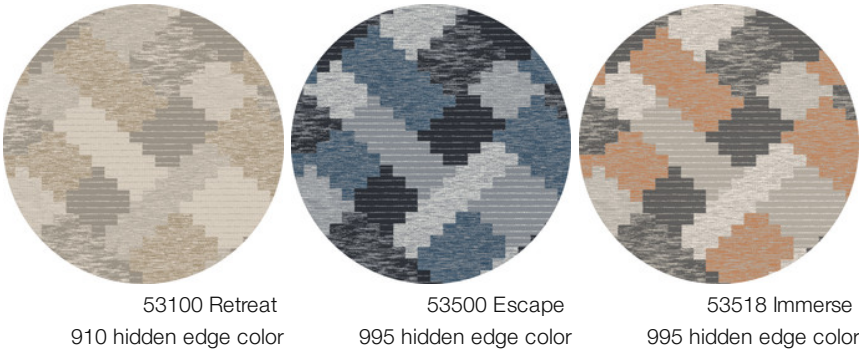


Colca 11x11 Circular Hidden Edge

Tipo De Produto	Tapetes	
Coleção	West Elm + Shaw Contract	
Número Do Produto	G287R	
Construção	Padrão Multinível Bouclé	
Fibra	Ecosolution Q® Nylon	
Método De Tingimento	100% Solution Dyed	
Backing Type	Ultraloc® + Base Antiderrapante	
Edge Type	Hidden Edge	
	u.s.	metric
Tamanho Do Produto	11 ft x 11 ft	3.35 m x 3.35 m
Espessura Total	0.466 in	11.82 mm

Available Colorways



Dados + Teste

Garantias

5 Anos Comercial Limitada

Atributos + Certificações

Health & Wellbeing	CRI Green Label Plus (GLP)   GLP8472
Indoor Air Quality	
Climate Impact	100% Reciclável
Product Packaging	
Global Product Assessment	Country of Origin**   Imported

Informação Adicional

\*\*Meets or exceeds all local and national regulations in country of manufacture. (Manufactured in an ISO 9001 & ISO 14001 certified facility or equivalent)

Maintenance Guidelines

### Produtos Coordenados

---

Carpet Tile: **Stonework Tile, Chisel Tile, Grit Tile, Zest Tile, Zeal Tile, Spark Tile**

Broadloom: **Verve, Colca, Kista By Lindsay Stead, Stone, Flame, Shale, Diamonds**



## PVC-Free

Corporate Headquarters +1 800 257 7429 | +1 706 532 7984 | Atlanta +1 404 853 7429 | Bengaluru +91 80 6773 0202 | Beijing +86 10 6568 588 | Chicago +1 312 467 1331 | Dubai +971 4 584 6956 | Hong Kong +852 2623 0371 | London +44 207 961 4120 | Los Angeles +1 800 233 1614 | Melbourne +61 3 9939 8543 | Mexico City +55 5010 7600 | Mumbai +91 22 6284 5050 | Nantong +86 400 800 7429 | New York +1 212 953 7429 | Paris +33 (0) 1 81 22 44 39 | San Francisco +1 415 955 1920 | Shanghai +86 21 3338 4000 | Singapore +65 6733 1811 | Sydney +61 800 556 302

© 2025 Shaw Industries Group, Inc., a Berkshire Hathaway Company  
April 18, 2025

2 of 2