

## Detail Hexagon Taskworx® Tile

Stijlnummer	<b>H001X</b>	
Collectie	<b>Auxiliary</b>	
Producttype	<b>Tapijttegel</b>	
Construction	<b>Standard</b>	<b>Data + Performance</b>
Type Fabricage	<b>ISO 2424</b>	<b>tufted 1/12"   47.2 per 10cm</b>
Uitzicht	<b>ISO 2424</b>	<b>Niveau Lus</b>
Verfmethode	<b>EN 994</b>	<b>100% In Oplossing Geverfd</b>
Productformaat	<b>EN 994</b>	<b>73.2 cm x 24.9 cm   20 tiles (4.25 m²) per box</b>
Primaire Backing	<b>ISO 2424</b>	<b>Pet Nonwoven</b>
Secundaire Backing	<b>ISO 2424</b>	<b>Taskworx® Tegel   Polymeer Gemodificeerd Bitumen</b>
Vezel	<b>ISO 2424</b>	<b>Aquafil Polyamide 6</b>
Totale Dikte	<b>ISO 1765</b>	<b>5.3 mm</b>
Afgewerkte Pooldikte	<b>ISO 1766</b>	<b>2.1 mm</b>
Totale Massa	<b>ISO 8543</b>	<b>3920 g/m²</b>
Getuft Gewicht	<b>ISO 2424</b>	<b>450 g/m²</b>
Effectieve Poolmassa	<b>ISO 8543</b>	<b>259 g/m²</b>
Pooldichtheid	<b>ISO 8543</b>	<b>0.122 g/cm³</b>
Totaal Gerecycleerde Inhoud		<b>53% (pre-consumer 53%   post-consumer 0%)</b>



### Gegevens

Steken	<b>ISO 1763</b>	<b>184,000/m²   39 per 10 cm</b>
Elektrostatische Weerstand	<b>ISO 6356</b>	<b>≤ 2.0 kv (Stroll Test)</b>
Gebruik Classificatie	<b>EN 1307</b>	<b>33 Commercial Heavy</b>
Luxeklasse	<b>EN 1307</b>	<b>LC1</b>
Dimensionale Stabiliteit	<b>EN 986</b>	<b>≤ 0.2%</b>
Contactgeluidsisolatie	<b>ISO 10140</b>	<b>21db</b>
Geluidsabsorptieclassificatie	<b>ISO 354/11654</b>	<b>0.10 Aw</b>
Warmteweerstand m² K/w	<b>ISO 8302</b>	<b>0.046 M² K/W Tog 0.46</b>
Weerstand Tegen Droog Uitglijden	<b>ISO 13893</b>	<b>Pass / No Pulled Loops</b>
Kleurvastheid Voor Licht	<b>ISO 105-B02</b>	<b>&gt;6</b>
Ontvlambaarheid	<b>EN 13501-1</b>	<b>Bfl-S1 (Adhered Testing)</b>
Stoel Met Wieltjes	<b>EN 985</b>	<b>≥2.4 Continuous USE</b>

**15 Jaar Commercieel Beperkt** subject to installation in full accordance with the manufacturer's instructions and a regular effective cleaning and maintenance programme. Second location warranties are available with the use of non-adhesive IOBAC Magtabs and Tabit accessories.

### Aanbevolen Installatiemethode



**Random**



**Monolithic**



21dB

## Coördinerende Producten

Carpet Tile: **Complement Hexagon Taskworx® Tile, Feature Hexagon Taskworx® Tile, Complement Taskworx® Tile, Detail Taskworx® Tile, Feature Taskworx® Tile**

## Kenmerken + Certificeringen

Cradle to Cradle gecertificeerd™

Environmental Product Declaration (EPD)

milieugarantie

ISO 9001

land van herkomst

BREEAM Contribution Credit

**Bronzen Vlak (Versie 3.1)**

**3de Partij Gecertificeerd in Overeenstemming Met ISO14044, ISO14025 & EN15804**

**Terugnamebeleid Aangeboden Voor Alle Taskworx Producten**

**Gecertificeerd**

**Verenigd Koninkrijk**

**Certificate of Approval**

**Schools/Offices/Health/Industrial Shed**

**Retail**

## Well V2 Contribution Credit

X08 Reductie gevaarlijke stoffen Deel 1: Beperking Optimalisatie Gevaarlijke Materialen - 1 pt

**C2C Bronze Level (Version 3.1)**

X10 Reductie van vluchtige stoffen Deel 1 (A): Beheer Vluchtige Organische Stoffen (VOS) Optimalisatie - 1 pt

**C2C Bronze Level (Version 3.1)**

X10 Volatile Compound Reduction

**C2C Bronze Level (Version 3.1)**

Part 2: Manage Semi-Volatile Organic Compounds (SVOCs) Optimization

X11 Langetermijn-emissiebeheersing - deel 2: Optimalisering van vloeren - 1 pt

**M1> Emissions Class For Building Material**

X13 Verbeterde materiaalvoorzorgsmaatregelen Deel 1: Optimaliseren van materiaalkeuze - max 2 punten

**C2C Bronze Level (Version 3.1)**

X14 Transparantie van materialen Deel 1: Optimalisatie: Bevorderen van ingrediëntenopenbaarmaking - max 2 punten

**C2C Bronze Level (Version 3.1)**

## Groen Leed Bijdragekrediet

"MR-krediet: openbaarmaking en optimalisering van bouwproducten Milieuproductverklaringen - Optie 1: Milieuproductverklaring (EPD)"

**3rd Party Certified in Accordance with ISO14044, ISO14025 & EN15804**

"MR-krediet: Openbaarmaking en optimalisering van bouwproducten Materiaalingrediënten - Optie 1: Rapportage materiaalingrediënten"

**C2C Bronze Level (Version 3.1)**

"MR-krediet: openbaarmaking en optimalisering van bouwproducten Materiaalingrediënten - Optie 2: Optimalisering van materiaalingrediënten"

**C2C Bronze Level (Version 3.1)**

## Air Quality

Indoor Air Comfort Gold

**Certified**

M1

**Certified**

## Memberships

WGBC Framework

**WGBC Framework**

UKGBC

**UKGBC**

Emirates Green Building Council

**Emirates Green Building Council**

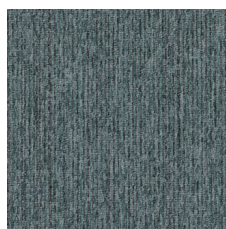
Chemsec

**Chemsec**

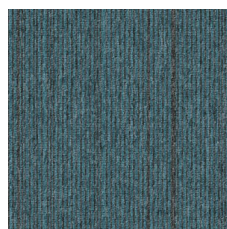
### Lichtreflectiewaarde



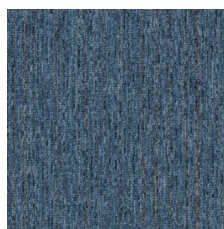
Smoke Spring 83326  
LRV 14.6 | L\* 45.02



Smoke Mint 83327  
LRV 13.2 | L\* 43.1



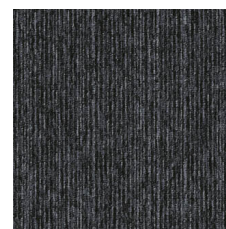
Pebble Lagoon 83419  
LRV 10.8 | L\* 39.27



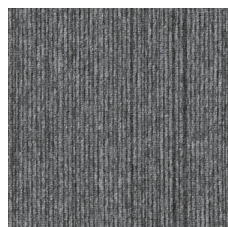
Smoke Cadet 83440  
LRV 10.7 | L\* 39.01



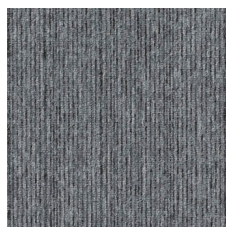
Smoke Azure 83486  
LRV 10.2 | L\* 38.22



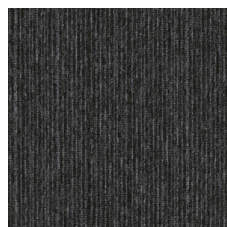
Smoke Black 83505  
LRV 6.1 | L\* 29.62



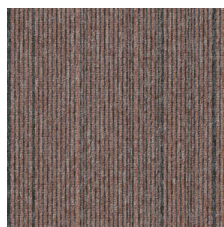
Pebble Ash 83535  
LRV 13.5 | L\* 43.55



Smoke Ice 83536  
LRV 16 | L\* 46.97



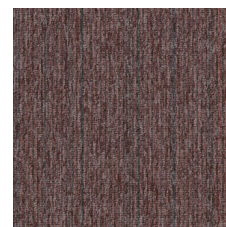
Pebble Flint 83549  
LRV 5 | L\* 26.74



Pebble Blush 83675  
LRV 13.8 | L\* 43.98



Pebble Coral 83866  
LRV 9.8 | L\* 37.44



Pebble Blossom 83870  
LRV 9.2 | L\* 36.42

### Aanvullende Informatie

\*\*Manufactured in ISO 9001 certified facility. Meets or exceeds all local and national regulations in country of manufacture.

[Installation Guidelines](#)

[Maintenance Guidelines](#)

15 jaar commercieel beperkt

Specifications are subject to nominal manufacturing variance. Material supply and/or manufacturing processes may necessitate changes without notice.

This product is an exclusive design and may not be duplicated in any manner. Use of this design in the creation of another product design is also strictly prohibited.

Visit [shawcontract.com/testing](https://shawcontract.com/testing) for more information.



Corporate Headquarters +1 800 257 7429 | +1 706 532 7984 | Atlanta +1 404 853 7429 | Bengaluru +91 80 6773 0202 | Beijing +86 10 6568 588 | Chicago +1 312 467 1331 | Dubai +971 4 584 6956 | Hong Kong +852 2623 0371 | London +44 207 961 4120 | Los Angeles +1 800 233 1614 | Melbourne +61 3 9939 8543 | Mexico City +55 5010 7600 | Mumbai +91 22 6284 5050 | Nantong +86 400 800 7429 | New York +1 212 953 7429 | Paris +33 (0) 1 81 22 44 39 | San Francisco +1 415 955 1920 | Shanghai +86 21 3338 4000 | Singapore +65 6733 1811 | Sydney +61 800 556 302

© 2025 Shaw Industries Group, Inc., a Berkshire Hathaway Company  
June 7, 2025

3 of 3