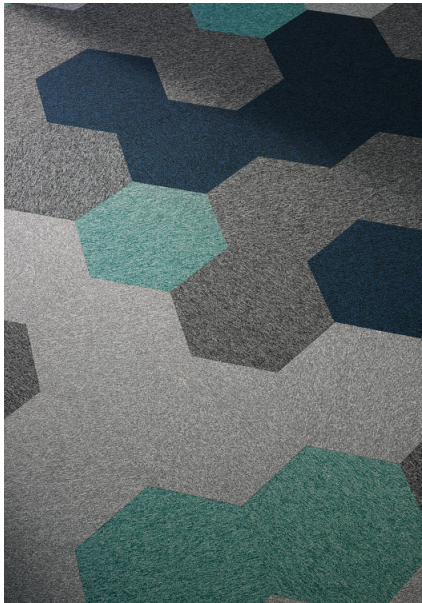




Complement Hexagon Taskworx® Tile

Style Number	H000X	
Collection	Auxiliary	
Product Type	Carpet Tile	
Construction	Standard	Data + Performance
Type of Manufacture	ISO 2424	tufted 1/12"   47.2 per 10cm
Aspect	ISO 2424	Level Loop
Dye Method	EN 994	100% Solution Dyed
Dimensions	EN 994	73.2 cm x 24.9 cm   20 tiles (4.25 m²) per box
Primary Backing	ISO 2424	Pet Non-Woven
Secondary Backing	ISO 2424	Taskworx® Tile   Polymer Modified Bitumen
Pile Fibre Composition	ISO 2424	Aquafil Polyamide 6
Total Thickness	ISO 1765	5.3 mm
Effective Pile Thickness	ISO 1766	2.1 mm
Total Mass	ISO 8543	3920 g/m²
Nominal Total Pile Mass	ISO 2424	450 g/m²
Effective Pile Mass	ISO 8543	259 g/m²
Pile Density	ISO 8543	0.122 g/cm³
Total Recycled Content		53% (pre-consumer 53%   post-consumer 0%)



Performance

Number of Tufts	ISO 1763	184,000/m²   39 per 10 cm
Electrostatic Propensity	ISO 6356	≤ 2.0 kv (Stroll Test)
Use Classification	EN 1307	33 Commercial Heavy
Luxury Class	EN 1307	LC1
Dimensional Stability	EN 986	≤ 0.2%
Impact Sound Insulation	ISO 10140	21db
Sound Absorption Classification	ISO 354/11654	0.10 Aw
Thermal Resistance m² K/W	ISO 8302	0.046 M² K/W Tog 0.46
Dry Slip Resistance	ISO 13893	Pass / No Pulled Loops
Colour Fastness To Light	ISO 105-B02	>6
Flammability	EN 13501-1	Bfl-S1 (Adhered Testing)
Castor Chair	EN 985	≥2.4 Continuous Use

15 Year Commercial Limited Warranty subject to installation in full accordance with the manufacturer's instructions and a regular effective cleaning and maintenance programme. Second location warranties are available with the use of non-adhesive IOBAC Magtabs and Tabit accessories.

Recommended Installation Method



Random



Monolithic

Product Transparency

Shaw Contract is dedicated to providing clients with a building chemistry that's safe and dependable. Working together, we will help you meet your goals as they pertain to material health. TaskWorx® products are Cradle to Cradle Certified® Bronze and assessed for impacts on human health and the environment. This product can be recycled. When it's time to replace, we can collect through our re-[TURN] scheme in EMEA.



21dB

Corporate Headquarters +1 800 257 7429 | +1 706 532 7984 | Atlanta +1 404 853 7429 | Bengaluru +91 80 6773 0202 | Beijing +86 10 6568 588 | Chicago +1 312 467 1331 | Dubai +971 4 584 6956 | Hong Kong +852 2623 0371 | London +44 207 961 4120 | Los Angeles +1 800 233 1614 | Melbourne +61 3 9939 8543 | Mexico City +55 5010 7600 | Mumbai +91 22 6284 5050 | Nantong +86 400 800 7429 | New York +1 212 953 7429 | Paris +33 (0) 1 81 22 44 39 | San Francisco +1 415 955 1920 | Shanghai +86 21 3338 4000 | Singapore +65 6733 1811 | Sydney +61 800 556 302

Coordinating Products

Carpet Tile: **Detail Hexagon Taskworx® Tile, Feature Hexagon Taskworx® Tile, Complement Taskworx® Tile, Detail Taskworx® Tile, Feature Taskworx® Tile**

Material Health & Environmental Certifications

Cradle to Cradle Certified®	<b>Bronze Level (Version 3.1)</b>
Environmental Product Declaration (EPD)	<b>3rd Party Certified in Accordance with ISO14044, ISO14025 &amp; EN15804</b>
Environmental Guarantee*	<b>Take Back Policy Offered For All Taskworx Products</b>
ISO 9001	<b>Certified</b>
Country of Origin**	<b>United Kingdom</b>
BREEAM Contribution Credit	<b>Certificate of Approval Schools/Offices/Health/Industrial Shed Retail</b>

WELL V2 Contribution Credit

X08 Hazardous Material Reduction Part 1: Limit Hazardous Materials Optimization	<b>C2C Bronze Level (Version 3.1)</b>
X10 Volatile Compound Reduction Part 1 (A): Manage Volatile Organic Compounds (VOCs) Optimization	<b>C2C Bronze Level (Version 3.1)</b>
X10 Volatile Compound Reduction Part 2: Manage Semi-Volatile Organic Compounds (SVOCs) Optimization	<b>C2C Bronze Level (Version 3.1)</b>
X11 Long Term Emissions Control Part 2: Flooring Optimization	<b>M1&gt; Emissions Class For Building Material</b>
X13 Enhanced Material Precaution Part 1: Select Optimized Materials Optimization	<b>C2C Bronze Level (Version 3.1)</b>
X14 Material Transparency Part 1: Promote Ingredient Disclosure Optimization	<b>C2C Bronze Level (Version 3.1)</b>

Leed v4 Contribution Credits

MR Credit: Building Product Disclosure and Optimization Environmental Product Declarations - Option 1: Environmental Product Declaration (EPD)	<b>3rd Party Certified in Accordance with ISO14044, ISO14025 &amp; EN15804</b>
MR Credit: Building Product Disclosure and Optimization Material Ingredients - Option 1: Material Ingredient Reporting	<b>C2C Bronze Level (Version 3.1)</b>
MR Credit: Building Product Disclosure and Optimization Material Ingredients - Option 2: Material Ingredient Optimization	<b>C2C Bronze Level (Version 3.1)</b>
EQ Credit: Low Emitting Materials Option 1: Product Category Calculations	<b>Certified</b>

Air Quality

Indoor Air Comfort Gold	<b>Certified</b>
M1	<b>Certified</b>

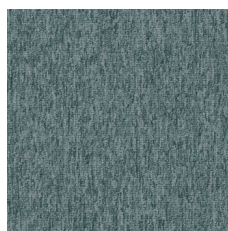
Memberships

WGBC Framework	<b>WGBC Framework</b>
UKGBC	<b>UKGBC</b>
Emirates Green Building Council	<b>Emirates Green Building Council</b>
Chemsec	<b>Chemsec</b>

## Light Reflectance Value



Spring 83326  
LRV 17.7 | L\* 49.08



Mint 83327  
LRV 15.9 | L\* 46.86



Seaweed 83335  
LRV 10.3 | L\* 38.29



Jade 83406  
LRV 10 | L\* 37.83



Lagoon 83419  
LRV 13 | L\* 42.8



Cadet 83440  
LRV 11.3 | L\* 40.15



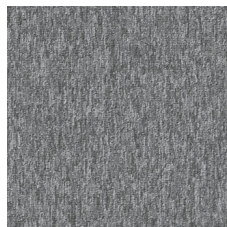
Azure 83486  
LRV 9.8 | L\* 37.54



Admiral 83496  
LRV 4 | L\* 23.75



Black 83505  
LRV 3.6 | L\* 22.12



Ash 83535  
LRV 18.2 | L\* 49.71



Ice 83536  
LRV 20.9 | L\* 52.84



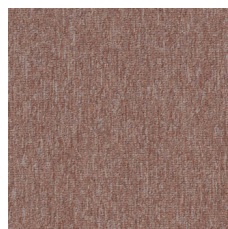
Flint 83549  
LRV 3.6 | L\* 22.28



Pebble 83558  
LRV 7.7 | L\* 33.37



Smoke 83581  
LRV 9.4 | L\* 36.76



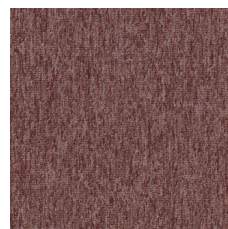
Blush 83675  
LRV 18.3 | L\* 49.9



Crimson 83857  
LRV 7.7 | L\* 33.24



Coral 83866  
LRV 11.5 | L\* 40.45



Blossom 83870  
LRV 11 | L\* 39.57

## Additional Information

\*\*Manufactured in ISO 9001 certified facility. Meets or exceeds all local and national regulations in country of manufacture.

[Installation Guidelines](#)

[Maintenance Guidelines](#)

[15 Year Commercial Limited warranty](#)

Specifications are subject to nominal manufacturing variance. Material supply and/or manufacturing processes may necessitate changes without notice.

This product is an exclusive design and may not be duplicated in any manner. Use of this design in the creation of another product design is also strictly prohibited.

Visit [shawcontract.com/testing](http://shawcontract.com/testing) for more information.

