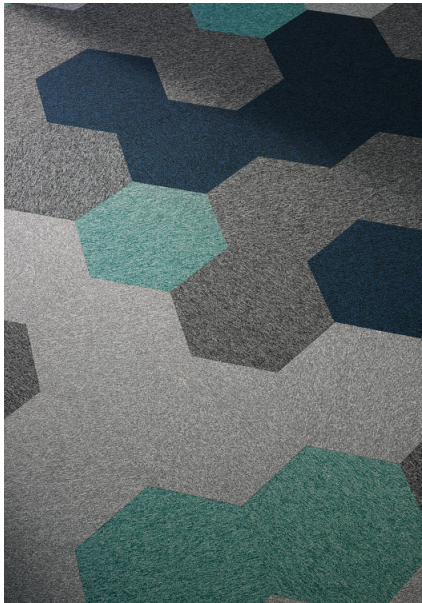




Complement Hexagon Taskworx® Tile

Numéro Du Style	H000X	
Collection	Auxiliary	
Type De Produit	Dalles De Moquette	
Construction	Standard	Data + Performance
Type De Fabrication	ISO 2424	tufted 1/12"   47.2 per 10cm
Construction	ISO 2424	Boucle De Niveau
Méthode De Coloration	EN 994	100% Solution Teinte
Dimensions Du Produit	EN 994	73.2 cm x 24.9 cm   20 tiles (4.25 m²) per box
Sous-couche Primaire	ISO 2424	Pet Non-Woven
Sous-couche Secondaire	ISO 2424	Taskworx® Tile   Bitume Modifié Par Polymère
Fibre	ISO 2424	Aquafil Polyamide 6
Epaisseur Du Velours	ISO 1765	5.3 mm
Épaisseur Du Velours Fini	ISO 1766	2.1 mm
Poids Total	ISO 8543	3920 g/m²
Poids Tufté	ISO 2424	450 g/m²
Poids Du Velours Utile	ISO 8543	259 g/m²
Densité Du Velours	ISO 8543	0.122 g/cm³
Contenu Recyclé Total	53% (pre-consumer 53%   post-consumer 0%)	



Données

Points	ISO 1763	184,000/m²   39 per 10 cm
Propension Electrostatique	ISO 6356	≤ 2.0 kv (Stroll Test)
Classification d'Utilisation	EN 1307	33 Commercial Heavy
Classification Luxe	EN 1307	LC1
Stabilité Dimensionnelle	EN 986	≤ 0.2%
Isolation Acoustique	ISO 10140	21db
Classification d'Absorption Sonore	ISO 354/11654	0.10 Aw
Résistance Thermique m² K/w	ISO 8302	0.046 M² K/W Tog 0.46
Dry Slip Resistance	ISO 13893	Pass / No Pulled Loops
Résistance De La Couleur À La Lumière	ISO 105-B02	>6
Inflammabilité	EN 13501-1	Bfl-S1 (Adhered Testing)
Chaise À Roulette	EN 985	≥2.4 Continuous USE

Limitée Commerciale De 15 Ans subject to installation in full accordance with the manufacturer's instructions and a regular effective cleaning and maintenance programme. Second location warranties are available with the use of non-adhesive IOBAC Magtabs and Tabit accessories.

Méthodes d'Installation Conseillées



Random



Monolithic



21dB

## Coordination Des Produits

Carpet Tile: **Detail Hexagon Taskworx® Tile, Feature Hexagon Taskworx® Tile, Complement Taskworx® Tile, Detail Taskworx® Tile, Feature Taskworx® Tile**

## Attributs + Certifications

Certification Cradle to Cradle™ (C2C)

Déclaration environnementale de produit (EPD)

garantie environnementale

ISO 9001

pays d'origine

BREEAM Contribution Credit

**Bronze Level (Version 3.1)**

**Certifié Par Un Organisme Tiers Conformément Aux Normes ISO14044, ISO 14025 & EN15804**

**Take Back Policy Offered For All Taskworx Products**

**Certifié**

**United Kingdom**

**Certificate of Approval**

**Schools/Offices/Health/Industrial Shed**

**Retail**

## Well V2 Contribution Credit

X08 Réduction des matières dangereuses Partie 1 : Optimiser la limitation des matières dangereuses – 1 pt

X10 Réduction des composés volatils Partie 1 (A) : Optimisation de la gestion des composés organiques volatils (COV) – 1 pt

X10 Volatile Compound Reduction

Part 2: Manage Semi-Volatile Organic Compounds (SVOCs) Optimization

X11 Contrôle des émissions à long terme Partie 2 : Optimisation des revêtements de sol – 1 pt

X13 Précaution accrue à l'égard des matériaux Partie 1 : Choisir des matériaux optimisés – max 2 pts

X14 Transparence des matériaux Partie 1 : Promouvoir l'optimisation de la divulgation des composants – max 2 pts

**C2C Bronze Level (Version 3.1)**

**C2C Bronze Level (Version 3.1)**

**C2C Bronze Level (Version 3.1)**

**M1> Emissions Class For Building Material**

**C2C Bronze Level (Version 3.1)**

**C2C Bronze Level (Version 3.1)**

## Contribution À La Certification Leed

MR Credit: Building Product Disclosure and Optimisation  
Environmental Product Declarations - Option 1: Environmental Product Declaration (EPD)

MR Credit: Building Product Disclosure and Optimisation  
Material Ingredients - Option 1: Material Ingredient Reporting

MR Credit: Building Product Disclosure and Optimisation  
Material Ingredients - Option 2: Material Ingredient Optimization

"Crédit EQ : matériaux faibles émissions  
Option 1 : calculs par catégorie de produit"

**3rd Party Certified in Accordance with ISO14044, ISO14025 & EN15804**

**C2C Bronze Level (Version 3.1)**

**C2C Bronze Level (Version 3.1)**

**Certified**

## Air Quality

Indoor Air Comfort Gold

M1

**Certified**

**Certified**

## Memberships

WGBC Framework

UKGBC

Emirates Green Building Council

Chemsec

**WGBC Framework**

**UKGBC**

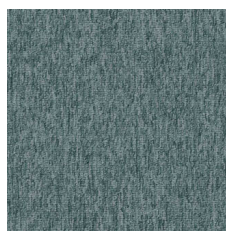
**Emirates Green Building Council**

**Chemsec**

## Indice De Réflexion Lumineuse



Spring 83326  
LRV 17.7 | L\* 49.08



Mint 83327  
LRV 15.9 | L\* 46.86



Seaweed 83335  
LRV 10.3 | L\* 38.29



Jade 83406  
LRV 10 | L\* 37.83



Lagoon 83419  
LRV 13 | L\* 42.8



Cadet 83440  
LRV 11.3 | L\* 40.15



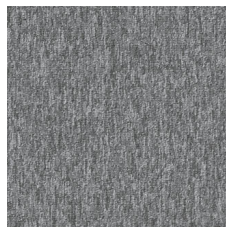
Azure 83486  
LRV 9.8 | L\* 37.54



Admiral 83496  
LRV 4 | L\* 23.75



Black 83505  
LRV 3.6 | L\* 22.12



Ash 83535  
LRV 18.2 | L\* 49.71



Ice 83536  
LRV 20.9 | L\* 52.84



Flint 83549  
LRV 3.6 | L\* 22.28



Pebble 83558  
LRV 7.7 | L\* 33.37



Smoke 83581  
LRV 9.4 | L\* 36.76



Blush 83675  
LRV 18.3 | L\* 49.9



Crimson 83857  
LRV 7.7 | L\* 33.24



Coral 83866  
LRV 11.5 | L\* 40.45



Blossom 83870  
LRV 11 | L\* 39.57

## Informations Supplémentaires

\*\*Manufactured in ISO 9001 certified facility. Meets or exceeds all local and national regulations in country of manufacture.

[Installation Guidelines](#)

[Maintenance Guidelines](#)

[Limitée commerciale de 15 ans](#)

Specifications are subject to nominal manufacturing variance. Material supply and/or manufacturing processes may necessitate changes without notice.

This product is an exclusive design and may not be duplicated in any manner. Use of this design in the creation of another product design is also strictly prohibited.

Visit [shawcontract.com/testing](http://shawcontract.com/testing) for more information.



Corporate Headquarters +1 800 257 7429 | +1 706 532 7984 | Atlanta +1 404 853 7429 | Bengaluru +91 80 6773 0202 | Beijing +86 10 6568 588 | Chicago +1 312 467 1331 | Dubai +971 4 584 6956 | Hong Kong +852 2623 0371 | London +44 207 961 4120 | Los Angeles +1 800 233 1614 | Melbourne +61 3 9939 8543 | Mexico City +55 5010 7600 | Mumbai +91 22 6284 5050 | Nantong +86 400 800 7429 | New York +1 212 953 7429 | Paris +33 (0) 1 81 22 44 39 | San Francisco +1 415 955 1920 | Shanghai +86 21 3338 4000 | Singapore +65 6733 1811 | Sydney +61 800 556 302

© 2025 Shaw Industries Group, Inc., a Berkshire Hathaway Company  
June 7, 2025

3 of 3