

## Belong Taskworx® Hexagon Tile

Numéro Du Style	<b>H003X</b>	
Collection	<b>Kindred</b>	
Type De Produit	<b>Dalles De Moquette</b>	
Construction	Standard	Data + Performance
Type De Fabrication	<b>ISO 2424</b>	<b>tufted 1/10"   39.4 per 10cm</b>
Construction	<b>ISO 2424</b>	<b>Tufté Structuré Bouclé à Motif</b>
Méthode De Coloration	<b>EN 994</b>	<b>100% Solution Teinte</b>
Dimensions Du Produit	<b>EN 994</b>	<b>73.2 cm x 24.9 cm   20 tiles (4.25 m²) per box</b>
Sous-couche Primaire	<b>ISO 2424</b>	<b>Pet Non-Woven</b>
Sous-couche Secondaire	<b>ISO 2424</b>	<b>Taskworx® Tile   Bitume Modifié Par Polymère</b>
Fibre	<b>ISO 2424</b>	<b>Ecosolution Q® Polyamide 6</b>
Épaisseur Du Velours	<b>ISO 1765</b>	<b>5.6 mm</b>
Épaisseur Du Velours Fini	<b>ISO 1766</b>	<b>2.4 mm</b>
Poids Total	<b>ISO 8543</b>	<b>4086 g/m²</b>
Poids Tufté	<b>ISO 2424</b>	<b>610 g/m²</b>
Poids Du Velours Utile	<b>ISO 8543</b>	<b>303 g/m²</b>
Densité Du Velours	<b>ISO 8543</b>	<b>0.128 g/m³</b>
Contenu Recyclé Total	<b>51% (pre-consumer 51%   post-consumer 0%)</b>	



### Données

Points	<b>ISO 1763</b>	<b>140,000/m²   35.4 per 10 cm</b>
Propension Electrostatique	<b>ISO 6356</b>	<b>≤ 2.0 kv (Stroll Test)</b>
Classification d'Utilisation	<b>EN 1307</b>	<b>33 Commercial Heavy</b>
Classification Luxe	<b>EN 1307</b>	<b>LC1</b>
Stabilité Dimensionnelle	<b>EN 986</b>	<b>≤ 0.2%</b>
Isolation Acoustique	<b>ISO 10140</b>	<b>26 Db</b>
Classification d'Absorption Sonore	<b>ISO 354/11654</b>	<b>0.15 Aw   Class E</b>
Résistance Thermique m² K/w	<b>ISO 8302</b>	<b>0.054 M² K/W Tog 0.54</b>
Dry Slip Resistance	<b>ISO 13893</b>	<b>Pass / No Pulled Loops</b>
Résistance De La Couleur À La Lumière	<b>ISO 105-B02</b>	<b>&gt;6</b>
Inflammabilité	<b>EN 13501-1</b>	<b>Bfl-S1 (Adhered Testing)</b>
Chaise À Roulette	<b>EN 985</b>	<b>≥2.4 Continuous USE</b>

**Limitée Commerciale De 15 Ans** subject to installation in full accordance with the manufacturer's instructions and a regular effective cleaning and maintenance programme. Second location warranties are available with the use of non-adhesive IOBAC Magtabs and Tabit accessories.

### Méthodes d'Installation Conseillées



**Random**



**Monolithic**



26 dB

Coordination Des Produits

Carpet Tile: **Dream Comfortworx® Tile, Belong Comfortworx® Tile, Together Comfortworx® Tile, Illusion Comfortworx® Tile, Together Hexagon Taskworx® Tile, Dream Taskworx® Tile, Belong Taskworx® Tile, Memory Taskworx® Tile, Together Taskworx® Tile, Illusion Taskworx® Tile**

Attributs + Certifications

Certification Cradle to Cradle™ (C2C)	<b>Bronze Level (Version 3.1)</b>
Déclaration environnementale de produit (EPD)	<b>Certifié Par Un Organisme Tiers Conformément Aux Normes ISO14044, ISO 14025 &amp; EN15804</b>
garantie environnementale	<b>Take Back Policy Offered For All Taskworx Products</b>
ISO 9001	<b>Certifié</b>
pays d'origine	<b>United Kingdom</b>
BREEAM Contribution Credit	<b>Certificate of Approval Schools/Offices/Health/Industrial Shed Retail</b>

Well V2 Contribution Credit

X08 Réduction des matières dangereuses Partie 1 : Optimiser la limitation des matières dangereuses – 1 pt	<b>C2C Bronze Level (Version 3.1)</b>
X10 Réduction des composés volatils Partie 1 (A) : Optimisation de la gestion des composés organiques volatils (COV) – 1 pt	<b>C2C Bronze Level (Version 3.1)</b>
X10 Volatile Compound Reduction Part 2: Manage Semi-Volatile Organic Compounds (SVOCs) Optimization	<b>C2C Bronze Level (Version 3.1)</b>
X11 Contrôle des émissions à long terme Partie 2 : Optimisation des revêtements de sol – 1 pt	<b>M1&gt; Emissions Class For Building Material</b>
X13 Précaution accrue à l'égard des matériaux Partie 1 : Choisir des matériaux optimisés – max 2 pts	<b>C2C Bronze Level (Version 3.1)</b>
X14 Transparence des matériaux Partie 1 : Promouvoir l'optimisation de la divulgation des composants – max 2 pts	<b>C2C Bronze Level (Version 3.1)</b>

Contribution À La Certification Leed

MR Credit: Building Product Disclosure and Optimisation Environmental Product Declarations - Option 1: Environmental Product Declaration (EPD)	<b>3rd Party Certified in Accordance with ISO14044, ISO14025 &amp; EN15804</b>
MR Credit: Building Product Disclosure and Optimisation Material Ingredients - Option 1: Material Ingredient Reporting	<b>C2C Bronze Level (Version 3.1)</b>
MR Credit: Building Product Disclosure and Optimisation Material Ingredients - Option 2: Material Ingredient Optimization	<b>C2C Bronze Level (Version 3.1)</b>
"Crédit EQ : matériaux faibles émissions Option 1 : calculs par catégorie de produit"	<b>Certified</b>

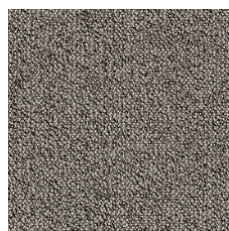
Air Quality

Indoor Air Comfort Gold	<b>Certified</b>
M1	<b>Certified</b>

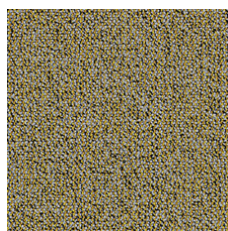
Memberships

WGBC Framework	<b>WGBC Framework</b>
UKGBC	<b>UKGBC</b>
Emirates Green Building Council	<b>Emirates Green Building Council</b>
Chemsec	<b>Chemsec</b>

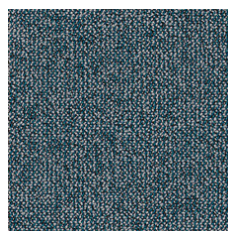
## Indice De Réflexion Lumineuse



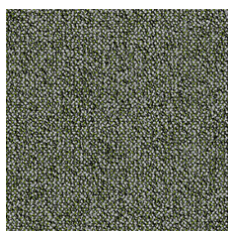
Warmth 48111  
LRV 18.5 | L\* 50.08



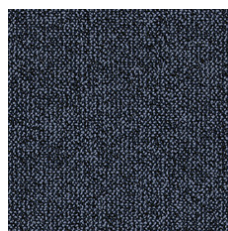
Golden 48211  
LRV 20.5 | L\* 52.43



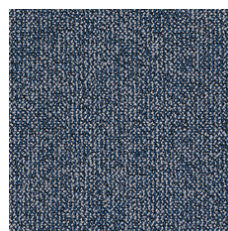
Comfort 48323  
LRV 12.6 | L\* 42.11



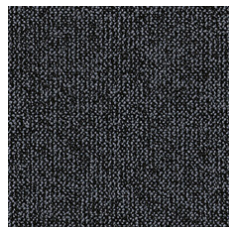
Greenery 48370  
LRV 14.6 | L\* 45.1



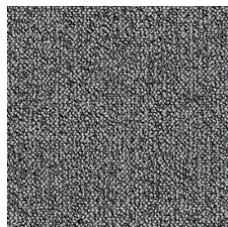
Solace 48485  
LRV 6 | L\* 29.3



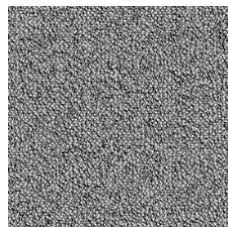
Serene 48486  
LRV 10.9 | L\* 39.37



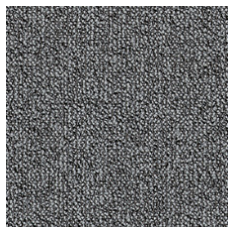
Blanket 48505  
LRV 5.8 | L\* 28.98



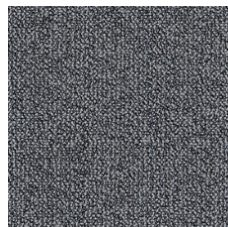
Hearten 48515  
LRV 14.1 | L\* 44.39



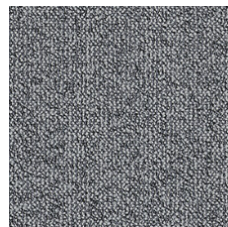
Greige 48516  
LRV 22.6 | L\* 54.64



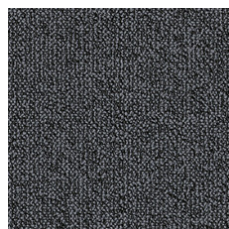
Ponder 48530  
LRV 15.3 | L\* 46.1



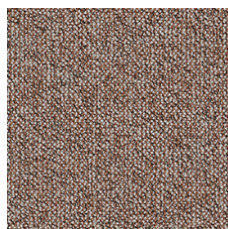
Sense 48535  
LRV 12.8 | L\* 42.44



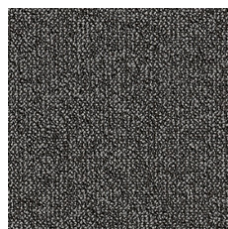
Rainstorm 48536  
LRV 18.5 | L\* 50.09



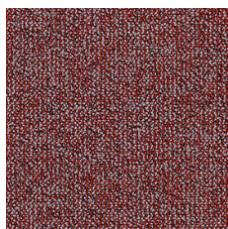
Slate 48557  
LRV 7.9 | L\* 33.86



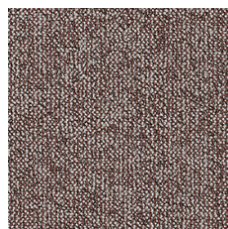
Apricot 48675  
LRV 19.1 | L\* 50.79



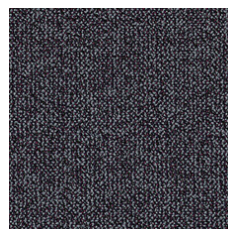
Nestle 48760  
LRV 8.6 | L\* 35.11



Fire 48856  
LRV 12.3 | L\* 41.66



Rosewood 48870  
LRV 17.2 | L\* 48.48



Insight 48979  
LRV 6.3 | L\* 30.26

## Informations Supplémentaires

\*\*Manufactured in ISO 9001 certified facility. Meets or exceeds all local and national regulations in country of manufacture.

[Installation Guidelines](#)

[Maintenance Guidelines](#)

[Limitée commerciale de 15 ans](#)

Specifications are subject to nominal manufacturing variance. Material supply and/or manufacturing processes may necessitate changes without notice.

This product is an exclusive design and may not be duplicated in any manner. Use of this design in the creation of another product design is also strictly prohibited.

Visit [shawcontract.com/testing](http://shawcontract.com/testing) for more information.



Corporate Headquarters +1 800 257 7429 | +1 706 532 7984 | Atlanta +1 404 853 7429 | Bengaluru +91 80 6773 0202 | Beijing +86 10 6568 588 | Chicago +1 312 467 1331 | Dubai +971 4 584 6956 | Hong Kong +852 2623 0371 | London +44 207 961 4120 | Los Angeles +1 800 233 1614 | Melbourne +61 3 9939 8543 | Mexico City +55 5010 7600 | Mumbai +91 22 6284 5050 | Nantong +86 400 800 7429 | New York +1 212 953 7429 | Paris +33 (0) 1 81 22 44 39 | San Francisco +1 415 955 1920 | Shanghai +86 21 3338 4000 | Singapore +65 6733 1811 | Sydney +61 800 556 302

© 2025 Shaw Industries Group, Inc., a Berkshire Hathaway Company  
June 8, 2025

3 of 3