

Belong Taskworx® Hexagon Tile

Stijlnummer	H003X	
Collectie	Kindred	
Producttype	Tapijttegel	
Construction	Standard	Data + Performance
Type Fabricage	ISO 2424	tufted 1/10" 39.4 per 10cm
Uitzicht	ISO 2424	Multilevel-Patroonlus
Verfmethode	EN 994	100% In Oplossing Geverfd
Productformaat	EN 994	73.2 cm x 24.9 cm 20 tiles (4.25 m²) per box
Primaire Backing	ISO 2424	Pet Nonwoven
Secundaire Backing	ISO 2424	Taskworx® Tegel Polymeer Gemodificeerd Bitumen
Vezel	ISO 2424	Ecosolution Q® Polyamide 6
Totale Dikte	ISO 1765	5.6 mm
Afgewerkte Pooldikte	ISO 1766	2.4 mm
Totale Massa	ISO 8543	4086 g/m²
Getuft Gewicht	ISO 2424	610 g/m²
Effectieve Poolmassa	ISO 8543	303 g/m²
Pooldichtheid	ISO 8543	0.128 g/m³
Totaal Gerecycleerde Inhoud		51% (pre-consumer 51% post-consumer 0%)



Gegevens

Steken	ISO 1763	140,000/m² 35.4 per 10 cm
Elektrostatische Weerstand	ISO 6356	≤ 2.0 kv (Stroll Test)
Gebruik Classificatie	EN 1307	33 Commercial Heavy
Luxeklasse	EN 1307	LC1
Dimensionale Stabiliteit	EN 986	≤ 0.2%
Contactgeluidsisolatie	ISO 10140	26 Db
Geluidsabsorptieclassificatie	ISO 354/11654	0.15 Aw Class E
Warmteweerstand m² K/w	ISO 8302	0.054 M² K/W Tog 0.54
Weerstand Tegen Droog Uitglijden	ISO 13893	Pass / No Pulled Loops
Kleurvastheid Voor Licht	ISO 105-B02	>6
Ontvlambaarheid	EN 13501-1	Bfl-S1 (Adhered Testing)
Stoel Met Wieltjes	EN 985	≥2.4 Continuous USE

15 Jaar Commercieel Beperkt subject to installation in full accordance with the manufacturer's instructions and a regular effective cleaning and maintenance programme. Second location warranties are available with the use of non-adhesive IOBAC Magtabs and Tabit accessories.

Aanbevolen Installatiemethode



Random



Monolithic



26 dB

Coördinerende Producten

Carpet Tile: **Belong Comfortworx® Tile, Together Hexagon Taskworx® Tile, Dream Taskworx® Tile, Belong Taskworx® Tile, Memory Taskworx® Tile, Together Taskworx® Tile, Illusion Taskworx® Tile**

Kenmerken + Certificeringen

Cradle to Cradle gecertificeerd™

Environmental Product Declaration (EPD)

milieugarantie

ISO 9001

land van herkomst

BREEAM Contribution Credit

Bronzen Vlak (Versie 3.1)

3de Partij Gecertificeerd in Overeenstemming Met ISO14044, ISO14025 & EN15804

Terugnamebeleid Aangeboden Voor Alle Taskworx Producten

Gecertificeerd

Verenigd Koninkrijk

Certificate of Approval

Schools/Offices/Health/Industrial Shed

Retail

Well V2 Contribution Credit

X08 Reductie gevaarlijke stoffen Deel 1: Beperking Optimalisatie Gevaarlijke Materialen - 1 pt

C2C Bronze Level (Version 3.1)

X10 Reductie van vluchtige stoffen Deel 1 (A): Beheer Vluchtige Organische Stoffen (VOS) Optimalisatie - 1 pt

C2C Bronze Level (Version 3.1)

X10 Volatile Compound Reduction

C2C Bronze Level (Version 3.1)

Part 2: Manage Semi-Volatile Organic Compounds (SVOCs) Optimization

X11 Langetermijn-emissiebeheersing - deel 2: Optimalisering van vloeren - 1 pt

M1> Emissions Class For Building Material

X13 Verbeterde materiaalvoorzorgsmaatregelen Deel 1: Optimaliseren van materiaalkeuze - max 2 punten

C2C Bronze Level (Version 3.1)

X14 Transparantie van materialen Deel 1: Optimalisatie: Bevorderen van ingrediëntenopenbaarmaking - max 2 punten

C2C Bronze Level (Version 3.1)

Groen Leed Bijdragekrediet

"MR-krediet: openbaarmaking en optimalisering van bouwproducten Milieuproductverklaringen - Optie 1: Milieuproductverklaring (EPD)"

3rd Party Certified in Accordance with ISO14044, ISO14025 & EN15804

"MR-krediet: Openbaarmaking en optimalisering van bouwproducten Materiaalingrediënten - Optie 1: Rapportage materiaalingrediënten"

C2C Bronze Level (Version 3.1)

"MR-krediet: openbaarmaking en optimalisering van bouwproducten Materiaalingrediënten - Optie 2: Optimalisering van materiaalingrediënten"

C2C Bronze Level (Version 3.1)

Air Quality

Indoor Air Comfort Gold

Certified

M1

Certified

Memberships

WGBC Framework

WGBC Framework

UKGBC

UKGBC

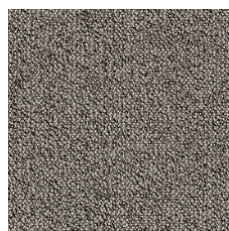
Emirates Green Building Council

Emirates Green Building Council

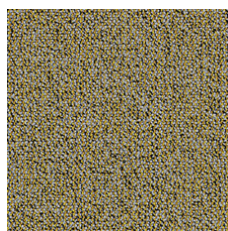
Chemsec

Chemsec

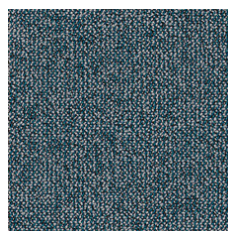
Lichtreflectiewaarde



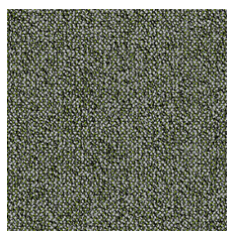
Warmth 48111
LRV 18.5 | L* 50.08



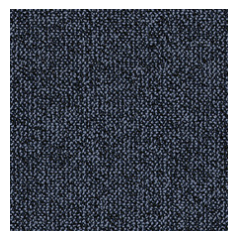
Golden 48211
LRV 20.5 | L* 52.43



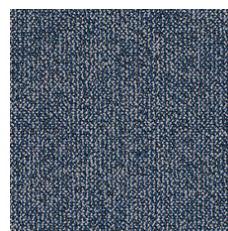
Comfort 48323
LRV 12.6 | L* 42.11



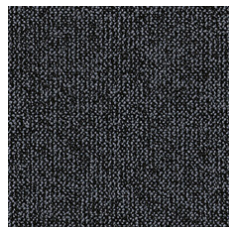
Greenery 48370
LRV 14.6 | L* 45.1



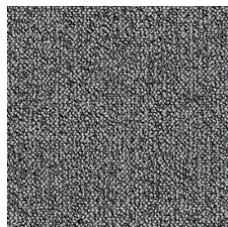
Solace 48485
LRV 6 | L* 29.3



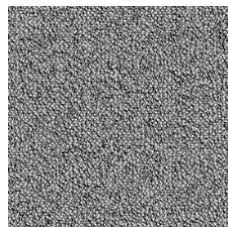
Serene 48486
LRV 10.9 | L* 39.37



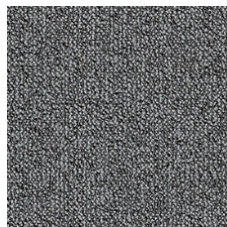
Blanket 48505
LRV 5.8 | L* 28.98



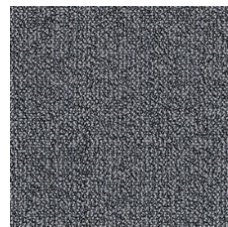
Hearten 48515
LRV 14.1 | L* 44.39



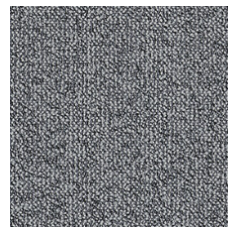
Greige 48516
LRV 22.6 | L* 54.64



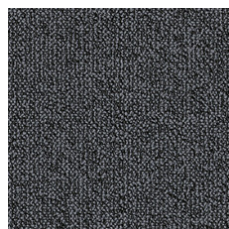
Ponder 48530
LRV 15.3 | L* 46.1



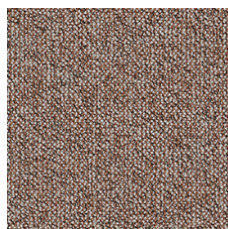
Sense 48535
LRV 12.8 | L* 42.44



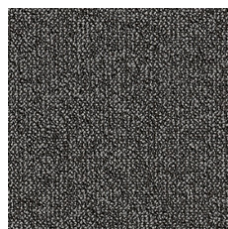
Rainstorm 48536
LRV 18.5 | L* 50.09



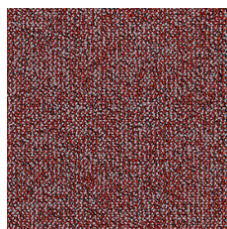
Slate 48557
LRV 7.9 | L* 33.86



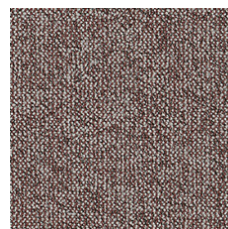
Apricot 48675
LRV 19.1 | L* 50.79



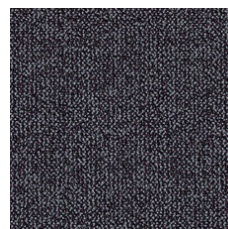
Nestle 48760
LRV 8.6 | L* 35.11



Fire 48856
LRV 12.3 | L* 41.66



Rosewood 48870
LRV 17.2 | L* 48.48



Insight 48979
LRV 6.3 | L* 30.26

Aanvullende Informatie

**Manufactured in ISO 9001 certified facility. Meets or exceeds all local and national regulations in country of manufacture.

[Installation Guidelines](#)

[Maintenance Guidelines](#)

[15 jaar commercieel beperkt](#)

Specifications are subject to nominal manufacturing variance. Material supply and/or manufacturing processes may necessitate changes without notice.

This product is an exclusive design and may not be duplicated in any manner. Use of this design in the creation of another product design is also strictly prohibited.

Visit shawcontract.com/testing for more information.



Corporate Headquarters +1 800 257 7429 | +1 706 532 7984 | Atlanta +1 404 853 7429 | Bengaluru +91 80 6773 0202 | Beijing +86 10 6568 588 | Chicago +1 312 467 1331 | Dubai +971 4 584 6956 | Hong Kong +852 2623 0371 | London +44 207 961 4120 | Los Angeles +1 800 233 1614 | Melbourne +61 3 9939 8543 | Mexico City +55 5010 7600 | Mumbai +91 22 6284 5050 | Nantong +86 400 800 7429 | New York +1 212 953 7429 | Paris +33 (0) 1 81 22 44 39 | San Francisco +1 415 955 1920 | Shanghai +86 21 3338 4000 | Singapore +65 6733 1811 | Sydney +61 800 556 302

© 2025 Shaw Industries Group, Inc., a Berkshire Hathaway Company
July 18, 2025

3 of 3